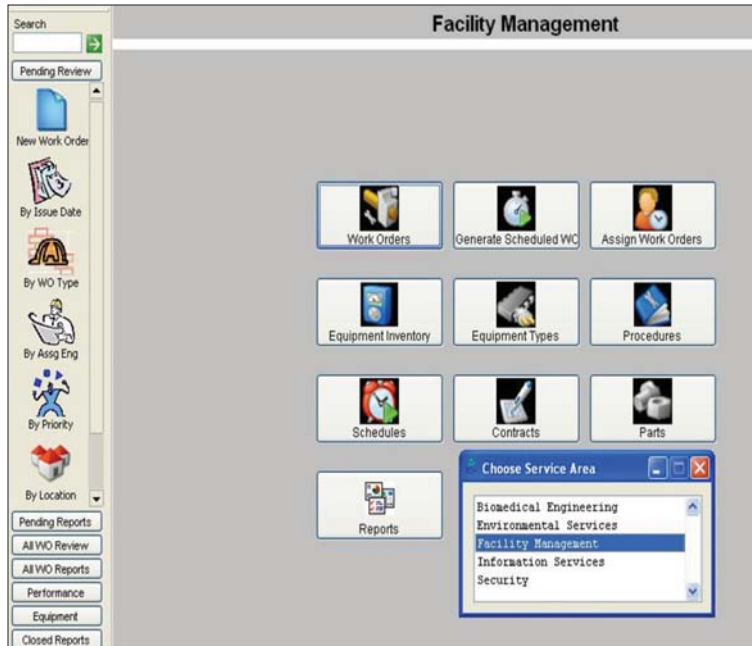


REASONS TO BUY – Multi-Departmental



Whether your facility is made up of one or many departments, one or many facilities, or many facilities with many departments, EQ2 has got your configuration covered. From Facility Management to Information services, EQ2's HEMS Enterprise system ensures that your purchase covers every service department in your organization.

Each service area has its own view of the information — facility management sees HVAC, power systems, etc. while biomedical engineering sees imaging equipment, IV pumps and defibrillators. In addition, all service areas have access to shared information such as locations and departments. EQ2 provides the people doing the work with the information tools they need to get the work documented and done efficiently.

This segmentation at the work level does not interfere with the ability of the VP of Operation

or the Director from asking questions and receiving answers about operations-across all service areas. From generating reports on hours and cost for service across all departments to the equipment inventory covered by all service departments to PM load by facility, EQ2 provides information for informed decision-making.

In addition, EQ2 provides Best Practices and Standardized Lists that are published to each service area that applies for Best Practices. What this means, is a corporation can maintain best practices without hiring an army to maintain them. This saves hundreds of hours of manpower and greatly increases the accuracy and reliability of reports. Save time, save money, and execute Best Practices rather than talk about them — get HEMS Enterprise. Read on for more benefits of using the HEMS enterprise solution.

